

Safer Ryedale
Partnership

Partnership

PLAN

2011-2012

Contents

| | |
|--|----|
| Foreword | 3 |
| Ryedale District | 4 |
| What is the Partnership Plan? | 5 |
| How does the Safer Ryedale Partnership work? | 6 |
| Review of 2010/11 | 8 |
| Our Priorities for 2011/12 | 12 |
| Safer Ryedale Action Plan | 13 |
| Funding and Resources | 14 |
| Community engagement | 15 |
| The future | 16 |
| Aims and Objectives for 2011/12 | 17 |
| Glossary | 20 |
| Acknowledgements | 21 |
| Contact details | 22 |

Foreword

Gary Housden, Chair of Safer Ryedale Delivery Team
and Head of Planning Ryedale District Council

Safer Ryedale Partnership was formed in 1998 and has since then successfully undertaken many projects to make Ryedale a safer place to live, work and visit. Partnership staff, Police Safer Neighbourhood Team, partner organisations and volunteers have worked effectively together to tackle areas of public concern and issues of crime and anti-social behaviour in Ryedale. This has resulted in Ryedale continuing to be one of the five safest places in England.

The last year has seen many changes in the way that community safety is perceived by the government. In line with public sector cuts, reporting requirements have changed and funding has been reduced. County level structures have changed in line with the reduced reporting requirements and most crucially for Safer Ryedale, its funding has reduced by half and will reduce further in 2012-13.

In 2010 we combined the Safer Ryedale Board with the Ryedale Strategic Partnership Board and this has resulted in more effective working at Board level. In April 2011 our Safer Roads priority action group combined with Scarborough's Road Safety group, resulting in savings of time and resources for partners. Further joint working will be investigated.

The biggest proposed change to crime and disorder reduction is the introduction of elected Police and Crime Commissioners from May 2012, who, among other powers and responsibilities, will make all decisions concerning funding within the Force Area of York and North Yorkshire. While the Bill to introduce this is not having an unopposed passage through Parliament, whatever version becomes law will radically change the way in which funding comes to Community Safety Partnerships.

In the meantime, we will continue to work with our partners to address our four priority areas and respond to emerging needs and trends. As always, we will use an intelligence led approach to prioritise the allocation and deployment of our resources. This Partnership Plan reviews our achievement for the period of the last Plan (2008-11) and presents our Priorities for the first year of the new Plan (2011-14)

We will continue to listen to our communities through face to face surveys, Community and Police Group forums and through Neighbourhood Watch liaison.

If you would like to find out more about our work and how we are contributing towards a safer Ryedale, please see our website www.ryesafe.org for our latest news.

Ryedale District

Situated between York and the Heritage Coastline of North Yorkshire, Ryedale is a rural area containing several small market towns, numerous villages and isolated dwellings. Ryedale covers 150,659 hectares (575 square miles) and is the largest district in North Yorkshire. The main route through the district is the A64 York to Scarborough road. In addition the A170 runs from Scarborough to Thirsk via Pickering and Helmsley and the A169 connects Malton and Whitby.

The district has a population of 53,500 living in 23,000 households and with 0.34 persons per hectare is ranked as having the 7th lowest population density of all 375 local authorities in England. Generally Ryedale has an older population with a greater proportion of people aged over 60 years (29.3% including 2.8% over 85) than the English average (24.2% and 2.1% respectively). It has a smaller proportion of people aged 15-29 years (15.1%) and 30-44 years (17.9%) than average in England (20% and 21.2% respectively).

People in Ryedale are also healthier and live in larger accommodation than the English average. Ryedale has one of the lowest crime rates in the country and much work is undertaken to maintain this level and to gain improvements.

What is the Partnership Plan?

Each Community Safety Partnership (CSP) has a statutory responsibility to produce a three year partnership plan, which identifies how we will tackle the short, medium and long term priorities associated with crime and disorder in the District. In order to ensure that we identify the correct priorities we take into account feedback from our local communities, obtained from various surveys and public engagement activities.

We also refer to the Joint Strategic Intelligence Assessment (JSIA) prepared and updated annually by North Yorkshire County Council and North Yorkshire Police. This pulls together data and information from various partners, showing levels and patterns of crime, disorder and substance misuse, changes in those levels and analysis of why those changes have occurred, including a review of the previous year's performance.

The previous Partnership Plan was completed in March 2011, and the tables on p 7 summarises the Partnership's performance in the last three years. This plan covers the period from April 2011 to March 2014, but we will continue to review and update it annually, based on the data published in the Ryedale JSIA and other locally identified priorities.

We aim to inform our communities of the priorities for 2011/12 and clearly detail what Safer Ryedale will deliver in order to keep Ryedale District one of the safest areas in the country. The plan outlines how Safer Ryedale will engage and interact with local communities, giving local people a voice on what matters.

Safer Ryedale conducts street surveys every six months. The most recent, in March 2011, involved 250 Ryedale residents completing questionnaires about issues in their neighbourhoods.

The results reveal that 94.5% of respondents feel that the crime level in Ryedale is low or fairly low compared with national crime levels and 97.5% feel that Ryedale is a safe place to live.

Dog mess and speeding motorists were the two main complaints with 35% and 39% of respondents saying this is an issue for them followed by 25% concerned about litter.

80% of residents think they are well informed by local Police and the District Council about what is being done to tackle issues of concern.

How Does the Safer Ryedale Partnership work?

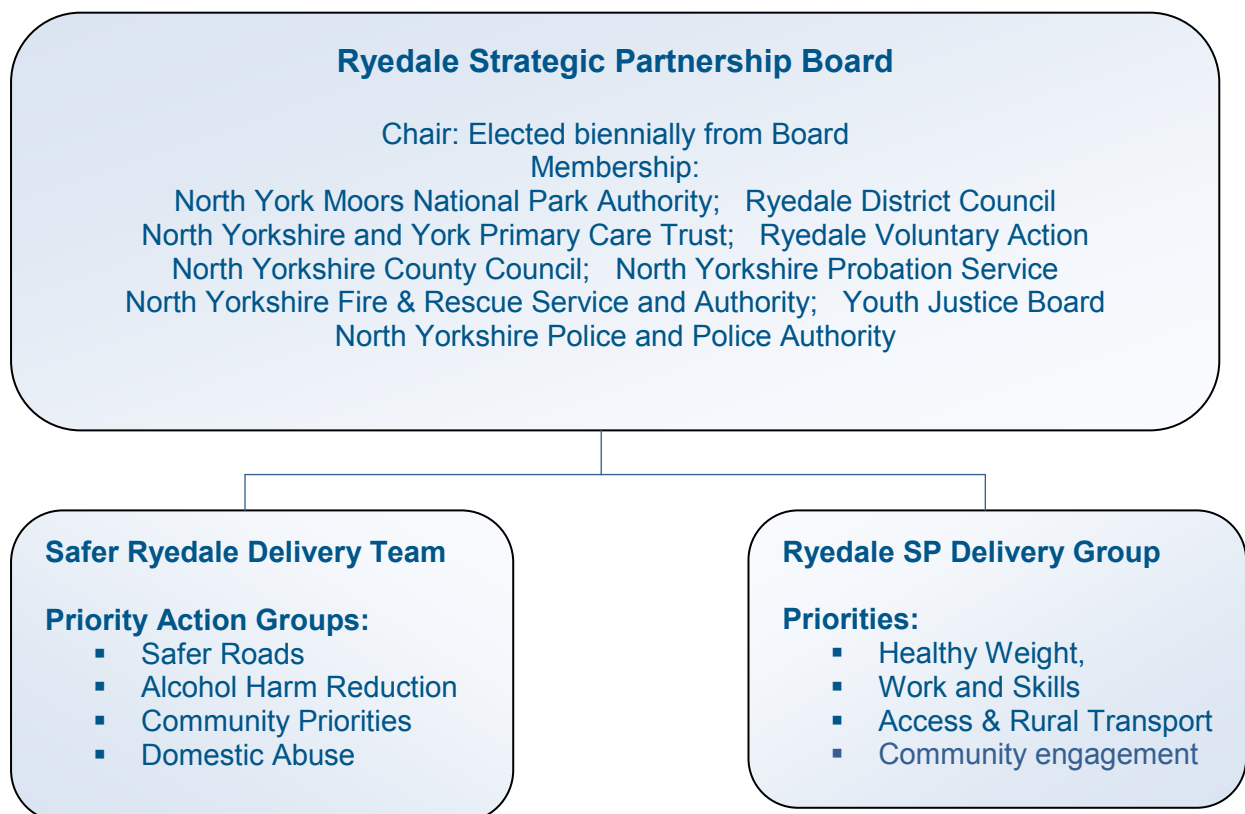
Safer Ryedale Community Safety Partnership

The Safer Ryedale Partnership brings together representatives from responsible authorities, who under section 17 of the Crime and Disorder Act 1998 have a duty to exercise their functions with due regard to the need to prevent crime and disorder in their area.

The Partnership is required to determine its priorities for action, taking into account the views of those who live and work in the area, and produce a Partnership Plan which sets out the actions it will take to address the identified priorities.

Since April 2010, the Board of Safer Ryedale has been amalgamated with the Ryedale Strategic Partnership Board. The Delivery Team and Priority Action groups have remained separate.

The diagram below illustrates this relationship:



The Partnership was supported in 2010-11 by three members of staff; the Community Partnerships Manager, the Community Partnerships Officer and the Crime and Disorder Officer who all worked closely with NY Police's Ryedale Safer Neighbourhood Team.

The staff team (employed by Ryedale District Council) have been retained for 2011-12, despite reductions in funding. NY Police's Safer Neighbourhood Teams have been re-structured following the Government spending cuts, however the Safer Ryedale Team continues to work closely with the local police and other partners, benefiting from many years of excellent working relationships.

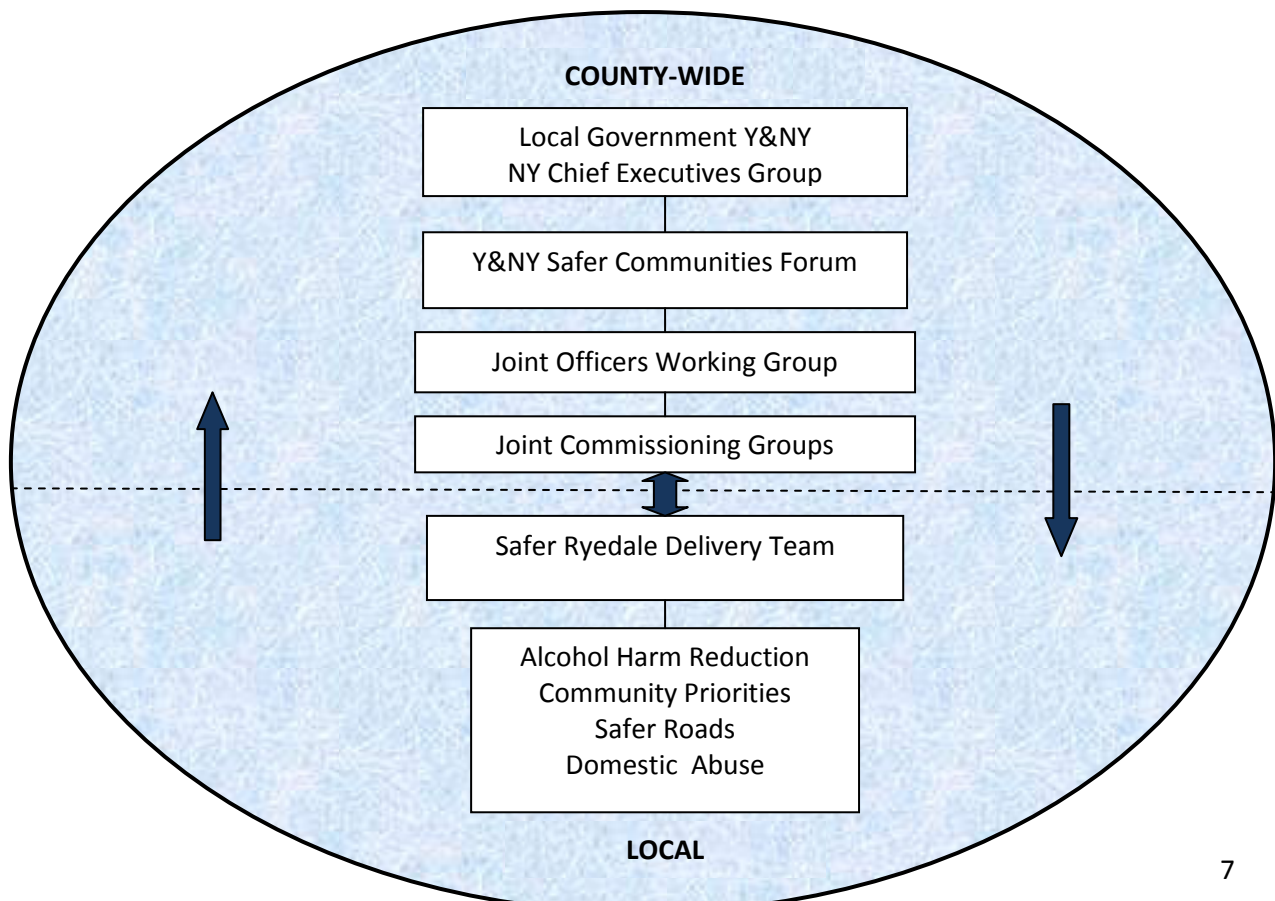
The Wider Partnership Framework

Since the changes introduced by the coalition government there have been some radical changes in North Yorkshire partnership structures; the North Yorkshire Strategic Partnership has been replaced by Local Government York & North Yorkshire, and the Chief Executives of all the responsible bodies, meeting as a group.

At present, the York and North Yorkshire Community Safety Forum continues to meet, although some of its workload now concerns managing the interim period until a Police and Crime Commissioner is elected or appointed (most likely in May 2012). See p? for further details.

At a local level, the Safer Ryedale Partnership works to implement the Partnership Plan, which helps to deliver the priorities agreed by the Partnership. We are also committed to working at sub-regional level with other Community Safety Partnerships, through the York and North Yorkshire Safer Communities Forum, to gain economies of scale in tackling issues common to us all.

The diagram below shows the relationship between the county-wide groups and our local delivery structure.



Review of Partnership Plan 2008-11

The table below shows the Partnership's performance in the three years of the previous Partnership Plan:

Safer Ryedale Overall Performance Against Performance Plan 2008-11: Table 1

| Indicator | 2006 / 7 Baseline | Target % Reduction By Apr 2011 | Target Reduction Number by 2011 | April 2011 Actual Total | Actual % Reduction by 2011 |
|-----------------------|----------------------|--------------------------------------|--|-------------------------------|-------------------------------|
| Burglary Dwelling | 99 | 10% | 89 | 61 | 38.38% |
| Burglary Non Dwelling | 239 | 5% | 227 | 154 | 35.56% |
| Criminal Damage | 516 | 10% | 464 | 351 | 31.97% |
| Damage to Vehicles | 191 | 5% | 182 | 138 | 30.89% |

This table shows projected performance against the selected indicators for the new Partnership Plan (2011-14) which is anticipated for April 2012

Safer Ryedale Overall Performance Against Performance Plan 2011-14: Table 2

| Indicator | 2009/10 Baseline | Target % Reduction By Apr 2014 | Target Reduction Number by 2014 | Total to Date (070611) | Projected Total April 2012 | Projected Actual % change by April 2012 |
|---------------------------|---------------------|---|--|------------------------------|----------------------------------|--|
| Shoptheft | 78 | 3.5% per year | 70 | 12 | 65 | -17.2% |
| Theft from Unattended MVs | 109 | 3.5% per year | 98 | 18 | 97 | -11.1% |
| Violence | 378 | 10% over 3 years | 340 | 54 | 291 | -23.1% |

Review of Partnership Plan 2010-11

In 2010-11, each of our Action Priorities supported the following projects and initiatives:

Domestic Abuse - £8,870

The Making Safe Scheme is a multi agency initiative which was developed in the Scarborough & Ryedale area, providing positive intervention to incidents of domestic abuse. The scheme aims to address the number of repeat victims and repeat offending across Ryedale.

Making Safe primarily works with the female and male victims and their families to ensure their safety and assist them in remaining in their own home. The scheme was awarded the Butler Trust Public Protection Award at Buckingham Palace on 3 March 2008. The Specialist Domestic Violence Courts continue to be held on Wednesdays at Scarborough Magistrates' Court.

Prior to the World Cup in June 2010, posters were delivered to all licensed premises in Ryedale with the Youth Justice Service's reparation team delivering leaflets to properties in certain areas. The Partnership also funded signage for all police vans and Ryedale District Council vehicles, with the intention that the signage would remain on the vehicles all year round to increase their impact, and awareness of domestic abuse. Lip balms printed with Domestic Abuse Services contact number were delivered and distributed through training sessions and given to key agencies across Ryedale.

The Freedom Project for women was launched here this year. This is a national programme working with men as well as women. It covers building confidence, managing stress, motivation and positive mental health and looks at patterns of relationships. It aims to:

- help women and men to understand the beliefs held by abusive men
- assist women in recognising future abusers
- help women to gain the self-esteem and confidence to improve the quality of their lives
- help women and men to understand the effect domestic violence has on children.

Domestic Abuse awareness raising packs were delivered to all doctors, nurses and midwives in Ryedale, promoting the work that Domestic Abuse Services and Safer Ryedale do for victims and perpetrators of domestic abuse.

Multi Agency Risk Assessment Conferences (MARAC) continue to be held in Ryedale, these provide a forum for those people at serious risk of harm from domestic abuse and make safety plans to support them. The aim of a MARAC is to increase the safety and well being of adults and of any children involved and reduce their risk of becoming repeat victims. A number of different agencies are invited to a MARAC and all sign a confidentiality agreement at the start of every MARAC

The Partnership funded a Teenage Violence group, this was a 10 week programme to work with young people to stop re-offending and learn about healthy relationships based on mutual respect, trust and support.

Alcohol Harm Reduction - £9,182

The Alcohol Respect Campaign (ARC) has continued this year. Trading Standards have carried out regular visits to selected licensed premises to check use of refusal registers and that the 'No ID No Sale' regulations are adhered to. Street Scene continued to liaise with North Yorkshire Police informing them of hot spot areas and any drug and alcohol litter finds.

The Partnership have continued to fund detached youth workers in the market towns of Malton and Pickering, with the aim of diverting young people from underage drinking and reducing alcohol related nuisance on the streets.

Links between Housing Officers and Safer Ryedale are working well with joint tenant and problem solving meetings.

A Malton & Norton Pubwatch Group has now been set up, mirroring the successful Pickering scheme. Quarterly meetings will take place unless additional meetings are needed to discuss individuals to be banned. If an individual is caught purchasing alcohol for underage drinkers (proxy sales) they are automatically banned from the pubs.

The youth shelter in Eastgate Car Park, Pickering has long been a contentious issue. There have been, over the last few years, several attempts to address the incidence in and around the youth shelter, of anti social behaviour, alcohol and drug misuse and sexual activity.

After much thought and input from many agencies, it was decided to remove the shelter and so hopefully reduce the incidence of anti social behaviour in the immediate vicinity. So far, according to Streetscene (Ryedale DC's Street Cleaning department), the number of complaints about anti social behaviour has reduced and alcohol related litter finds are less.

The police still regularly visit the car park to check that there are no problems, and members of the young persons drug and alcohol team from the Cambridge Centre, make outreach visits to this and other alcohol and drug hot spots to offer support to help young people to reduce their drug or alcohol use.

Community Priorities - £7,715

This year has seen the launch of Take The Lead, Take The Bag campaign. The District Council Dog Warden, PCs and PCSOs have been trained and will now be issuing fixed penalty tickets to dog owners who fail to clear up dog mess immediately. Dog owners were educated previously with posters and leaflets, press releases and radio interviews. PCSOs have been given a list of hot spot areas and leaflets to hand out to people walking dogs.

Safer Ryedale works closely with Trading Standards and currently we have 44 No Cold Calling Zones in Ryedale.

Sheduction was re-launched this year with a crime prevention checklist being sent out to all primary schoolchildren in Ryedale to use to check the safety of their sheds and garages with parents.

In response to the rise in rural crime and poaching in Ryedale we introduced Operation Sainfoin, which directed resources into the area to disrupt, deter and prosecute travelling criminals responsible for trespassing on land in pursuit of game and farm machinery. Regular checks of scrap metal businesses were made along with vehicles to ensure these were properly insured for business use and the carriage of waste.

Through spring and summer we targeted travelling criminals operating in the north of Ryedale with the assistance of partners North York Moors National Park Authority and the Forestry Commission to prevent opportunist thefts from cars in beauty spots. High visibility patrols and tracking devices were used and the travelling criminals were arrested.

Following frequent reports of anti-social behaviour in the Castlegate area of Malton, Safer Ryedale formed a group of people to address the issues being raised. Safer Ryedale involved all residents and businesses in Castlegate to identify the problems throughout the whole area and try to work through them. Several matters were raised and addressed including: vehicle noise, litter, untidy buildings, weeds, neglected empty properties, 'A' boards on footpaths, inappropriate signage, inappropriate lighting, gatherings of young people shouting and swearing and air quality.

Since the group was formed we have arranged for Police surgeries to be held at Castlegate using the mobile office, and the pavements to be regularly litter picked and weeded. Hanging baskets and 'Welcome to Castlegate' lamp post banners are to be fitted. The general feeling is that Castlegate residents have taken ownership of the area and there is a real sense of community now.

Safer Roads - £3,695 with additional funding from external sources

Safer Ryedale held a motorcycle event Safer Summer Wheels in Helmsley in July. The majority of accidents on the roads of Ryedale are vehicle collisions involving young male drivers, with excessive speed or inexperience being key factors, along with the use of motorcycles. The event raised awareness about how to be safe on our roads.

Safer Ryedale purchased hi-visibility vests for every 5-7 year old in Ryedale, we also ran a competition in all primary schools to come up with a name for the parallel initiative, which promoted our junior Neighbourhood Watch Scheme. Police Officers and Safer Ryedale gave prizes for pupils walking into school wearing their vests.

Winter young driving events were held in Malton, Helmsley and Pickering, involving young farmer groups and army cadets. The partnership funded guest speakers who had lost loved ones due to dangerous driving.

Towards the end of the year, we were approached by North Yorkshire Fire and Rescue Service (NYFRS) who were keen to combine the Ryedale Safer Roads group with Scarborough's Road Safety group. Due to reduced resources, NYFRS felt they could no longer support two groups; the new combined group met for the first time in April 2011.

Overview and Scrutiny Process

The Crime and Disorder (Overview and Scrutiny) Regulations 2009 came into force on 30 April 2009. In conjunction with Section 19 of the 2006 Act, they set out the requirements for discharging Crime and Disorder Overview and Scrutiny arrangements.

All Districts have Crime and Disorder Overview and Scrutiny Committees which undertake the statutory role "to review or scrutinise decisions made or other action taken, in connection with the discharge by the responsible authorities of their crime and disorder functions". In Ryedale, the Overview and Scrutiny Committee adopted this role.

Our Priorities for 2011/12

The Ryedale JSIA 2010, published in December last year, identified the following priorities for Safer Ryedale in 2011/12:

Children and Young People

- Partnership delivery structures
- Identifying and tackling vulnerable families and individuals (crime, ASB, missing persons, sexual crime, online safety)
- Address the re-offending rate

Reducing the harm caused by alcohol

- Linked to domestic abuse, violence, drink driving, ASB, racial abuse

Supporting the existing North Yorkshire Police Control Strategy themes of

- Repeat Victimisation (both complainant and location based) – with a focus on shop theft, violent crime and summer visitors
- Organised Crime Groups – focusing on partners identification and disruption
- Safer Roads (casualty reduction and preventing criminal use)
- Serious Acquisitive Crime (Burglary)

Safer Ryedale's Priorities for 2011-12 are based on the data published in the Ryedale JSIA 2010 and other locally identified priorities.

Safer Ryedale Delivery Team, meeting in August 2010 (when initial prioritisation for the Ryedale JSIA 2010 had been published) agreed the following four 'Priorities for Action' for 2011-12.

- Domestic Abuse
- Safer Roads
- Community Priorities to include Anti-Social Behaviour, Shop Theft, Theft from Unattended Vehicles and Violence
- Alcohol Harm Reduction

Following publication of the final Ryedale JSIA 2010, a working group met in January 2011 to decide the aims and objectives for each of the priorities. The working group took into account the need to focus resources, avoiding duplication and adding value where possible through partnership working. Having determined the working group also drew up indicative baselines and targets (see table on the next page).

Each of the Priority Action groups then decided on appropriate actions to deliver its aims, again taking into account the need to focus resources and to add value where possible. To this end, it has been agreed that the Ryedale Safer Roads group will combine with the Scarborough Road Safety group. The Action Plan reflects this joint working.

The Action Plan was approved by the Delivery Team and the Board in April 2011.

Safer Ryedale Action Plan 2011/12 – performance measures, baselines and targets

| Priority Performance Measures | Baseline | Target 2011/12 |
|--|---|--|
| Domestic Abuse | | |
| NI 32 Repeat incidents of Domestic Violence | 2009/10 - 22.2% | Target reduction by 1% per year, 3% by 13-14 |
| Safer Roads | | |
| Safer Roads NI47 Killed or Seriously Injured in Road Traffic Collisions | 2010 - 66 Figures taken from NYCC RTA document written by Paul Dea | Target reduction 1% per year over 3 years |
| Community Priorities | | |
| NI17 Perceptions of ASB | The baseline figure for 2009/10 is not available due to the Place Survey not taking place | Target reduction 0.5% per year |
| NI19 Rate of proven re-offending by young offenders | 2009/10 - 0.74 | |
| Shop Theft | 2009/10 - 74 | Target reduction 3.5% per year over 3 years |
| Theft from unattended vehicles | 2009/10 - 108 | Target reduction 3.5% per year over 3 years |
| Violent Crime | 2009/10 - 400 | Target reduction 3.5% per year over 3 years |
| Hate Crime | 2009/10 – 16 | Target reduction 3% per year over 3 years |
| Burglary of a Non Dwelling | 2009/10 – 170 | Target reduction 3% per year over 3 years |
| Domestic Burglary | 2009/10 – 53 | Target reduction 3% per year over 3 years |
| Alcohol Harm Reduction | | |
| Violent Crime | 2009/10 – 400 | Target reduction 3.5% per year over 3 years |
| Criminal Damage | 2009/10 – 397 | Target reduction 3% per year over 3 years |

Safer Ryedale Funding and Resources

Attracting funding for Community Safety has always been a challenge in areas like Ryedale that are low in crime; however as a result of spending constraints made necessary by the state of the national economy, Safer Ryedale's funding from central government (via the York and North Yorkshire Community Safety Forum) has reduced significantly from the amount received in 2010/11.

District Community Safety Partnerships receive allocations based on their respective crime levels and population; in addition the central government pot is top-sliced to fund county-wide strategic initiatives as it is acknowledged that some work is best undertaken from the centre. These projects are listed below.

Historically, financial contributions from partner agencies, the NY Police and Police Authority and NY County Council have enhanced local delivery; however due to the public sector funding cuts, only the Police Authority has continued this funding into 2011/12 and 2012/13.

Last financial year, the allocation made to Safer Ryedale from the sources mentioned above was £60,166 , which with a carry over of £21,185 gave a total budget of £81,829.

The allocation for 2011/12 is significantly less at £35,494 with a carry over of £13,477 giving a total budget of £48,970. The allocation for 2012/13 is expected to be £21,114 with no carry over anticipated.

Safer Ryedale will continue to explore opportunities for attracting external funding to complement local delivery and will work to ensure that Ryedale benefits from the county-wide projects listed below.

| PRG Safer Communities Forum | Relevant Safer Ryedale Priority |
|--|--|
| Domestic Violence Co-ordinators | Domestic Abuse |
| Accident and Emergency Alcohol Support Link Worker | Alcohol Harm Reduction |
| Alcohol Treatment Requirement | Alcohol Harm Reduction/Reducing Re-offending |
| Road Safety | Safer Roads |
| Top-sliced from Community Safety Fund | |
| Making Safe Temporary Accommodation | Domestic Abuse |
| MARAC Administrators | Domestic Abuse |
| Independent DV Co-ordinators | Domestic Abuse |
| AIM 2 (Risky Behaviour in Young People) | Domestic Abuse |
| Targeted Activities Programme | ASB |

The Safer Ryedale Delivery Team will continue to work with partners to utilise both financial and human (staff and volunteer) resources to develop and deliver activities to address the priorities. These will be monitored on a quarterly basis and progress reported on the website www.ryesafe.org

Community Engagement

Engaging the community is a core function of the Partnership. Without understanding the needs of the local community, priorities would be lost and actions would lack focus. The Partnership will develop and enhance approaches that will allow communities to identify their priorities and have a voice to ensure issues affecting their lives are dealt with and where appropriate, agencies, officers and elected members are held to account.

We are fortunate in Ryedale to have an excellent relationship with our community. 80% of people in Ryedale think they are informed about what is being done by the local Police and District Council to tackle environmental issues, anti-social behaviour and crime in their neighbourhood. 87% of residents feel confident that their concerns about crime and ASB are being addressed by Safer Ryedale and the local Safer Neighbourhood Police.

A variety of approaches are used to engage with communities, including those that are harder to reach. These include:

- Website www.ryesafe.org
- Media opportunities – we have a target of twelve press releases a year, which we exceed.
- Community & Police (CAP) meetings held in six areas of the district, three times a year
- Parish Liaison Forum
- Voluntary Sector Forums (Ryedale Together and the VCS Forum)
- Bi-annual street surveys in Ryedale's market towns
- The new 'Rural Voice' project, co-ordinated by Ryedale Voluntary Action, will also contribute to the involvement of the voluntary sector in Safer Ryedale's processes
- We have an effective and valued network of Watch Groups – 810 in total, made up of:

| | | |
|---------------|----------------------------------|--------------|
| Caravan Watch | Post Office Watch | School Watch |
| Country Watch | Neighbourhood Watch | Pub Watch |
| Shop Watch | Gold Watch (for jewellery shops) | Horse Watch |

Many of Ryedale's parishes have written a parish plan and these are another source of information regarding the public's concerns about community safety.

Community engagement is a legal requirement for the Partnership but we want to ensure it is a positive and worthwhile experience.

During 2011/12 the Partnership resources will be allocated to community engagement activities. We are committed to raising awareness, promoting safer communities and offering preventative advice on a variety of issues affecting our communities.

Safer Ryedale - The Future

Over the next 12 months we will be preparing for significant changes in community safety as preparations are made for the introduction of Police & Crime Commissioners (PCCs) who will play a key role in Community Safety Partnerships across the police force area of York and North Yorkshire.

It is confidently predicted that in May 2012 there will be elections for a Police & Crime Commissioner (PCC) for the North Yorkshire Police Area. This will coincide with the abolition of Police Authorities. The PCC will be responsible, on behalf of the public, for holding the Chief Constable to account, for setting the police budget and the policing priorities.

However, the PCC's role will extend beyond policing to the wider crime and disorder agenda, forging links (and often taking a leadership role) in areas such as: the Local Criminal Justice Board, CSPs, York & North Yorkshire Safer Communities Forum, youth justice, re-offending, substance misuse and, of course, the many vital partners who contribute to crime & disorder and community safety in the area.

The PCC will need to keep in touch with what is happening in local communities and this will need to be done through a variety of formal and informal contacts including the new Police and Crime Panel (which will include councillors from each area), local councils' overview and scrutiny panels, local community groups and partners.

From April 2013 all Community Safety grant funding will be paid to the PCC; Ministers would like this to happen from May 2012, but it is more likely that the funding for 2012/13 will be split with, for example, a six-month review of CSP spending or a half-year funding settlement in April with the PCC allocating funds for the second half of the financial year.

The Police Reform and Social Responsibility Bill which seeks to introduce these changes has already met with considerable opposition in the House of Lords, and is unlikely to become law before the autumn, but the Government continues to assert that the Bill will pass into law without substantial alterations.

At the present time, we have no way of knowing how the PCC for York and North Yorkshire will choose to conduct Community Safety across the force area or what the CSP landscape will look like in Ryedale in 2013.

Safer Ryedale will continue to work with all our partners within the district and force-wide to adapt to changes as they arise, in order to continue delivering the community safety solutions our communities expect.

Priorities Action Plan 2011-12

| Domestic Abuse | |
|-----------------------|---|
| Aim: | To protect and support people experiencing domestic abuse in Ryedale |
| Objective 1: | To reduce repeat incidents of domestic violence reviewed at MARAC (Multi Agency Risk Assessment Conference) |
| Actions: | <p>Coordinate, facilitate and increase numbers of cases at Multi Agency Risk Assessment Conferences (MARACs) in Ryedale.</p> <p>Continue to provide multi agency intervention to incidents of domestic abuse through Making Safe and implement recommendations following evaluation.</p> <p>Provide information on support networks to the public including the hard to reach communities eg BME, travellers and those in rural isolation</p> |
| Objective 2: | To deliver awareness raising and education initiatives on domestic abuse within the community. |
| Actions: | <p>Provide Train the trainer's package to professionals to enable the delivery of group work with children and young people that have been affected by domestic abuse.</p> <p>Provide educational packages in schools to include domestic abuse sexual violence and sexual abuse.</p> <p>Provide Safety Planning Training to professionals working with children and young people.</p> <p>Provide awareness raising events on evenings and weekends along side the Alcohol Harm Reduction Group on alcohol and links to domestic abuse incidents across Ryedale.</p> <p>Deliver Miss Dorothy.com into Ryedale schools and encourage other agencies to use in schools eg Police and NYF&R.</p> |

| Safer Roads | |
|--------------------|--|
| Aim: | To minimise the levels of Killed and Seriously Injured on the roads of Ryedale |
| Actions: | <p>Motorcycle Campaign to include:-</p> <ul style="list-style-type: none"> • Awareness raising events at Emergency Service Days and Ryedale Show • Cross County initiatives (Cleveland, West Yorkshire) • Internet Campaigns (Think Website) • Enforcement on key routes ie A170 <p>Older Drivers (Cars) Campaign to include:-</p> <ul style="list-style-type: none"> • Older drivers events, consult Age UK and Ryedale Older Persons Forum • Possible use of volunteer Advanced Driving Instructors • Seasonal events including reaction tests, eye tests and ADI assessments • Arrive Alive Classic presentations <p>Young Road User Campaign to include:-</p> <ul style="list-style-type: none"> • Drive Alive NYCC countywide Drive Alive within schools identified as a priority. Once this priority list is confirmed the schools in both districts requiring local targeting will be clearer. (Potential also for Young Farmers group, Cadets and Atmosphere and alternative education packages) • Education young school children "Learn & Live" • Daniel DVD for parents of young drivers • Develop Campaign Ride Aware for 2 wheel road users • Possible campaign UTube Video Clips, DVD, Drive Wise, Think Campaign, Tales of the Road. Use NYCC 4Youth face book page <p>Deployment of Data Loggers and use of the 4 Matrix Signs:- Continual deployment of the data loggers and signs where a need is identified.</p> <p>Operation Siren Multi Agency Campaigns:- The events focussing on seatbelts and mobile phone use will continue within Scarborough and Ryedale (Priority areas identified through the data loggers and also around schools).</p> |

| Community Priorities | |
|-----------------------------|---|
| Aim: | To minimise the effects of crime and anti social behaviour on the communities within Ryedale |
| Objective 1: | To reduce theft and violence by 10% 2011-2014 |
| Actions: | Continue Nominated Neighbour, Sheduction and Seasonal Crime Reduction Initiatives eg Expand and publicise No Cold Calling Zones |
| | Continue to promote Buying Time DVD on rural crime at events throughout Ryedale |
| | Continue to promote Watch Schemes |
| | Re-invigorate and increase the Membership of Shop Watch in Malton and Pickering. Work with partners and businesses to prevent re-offending through Restorative Justice or Banning Orders |
| | Promote Operation Paint to decrease the number of metal thefts. Carry out regular multi agency checks by all agencies |
| | Ensure all victims and offenders are correctly signposted to the Making Safe Scheme |
| Objective 2: | Improve perceptions of anti-social behaviour and reduce fear of crime by publishing and responding to public priorities highlighted by the community consultation survey |
| Actions: | Make full use of media and other publicity vehicles to achieve a minimum of 25 articles by March 2011 |
| | Maintain an ongoing consultation process on perception of anti social behaviour by utilising the Safer Ryedale website and twice yearly street surveys to be held in February and September 2011 |
| | Address the issue of dog fouling already identified by street surveys, through a system of robust enforcement. Link with Street Scene to identify pavement stencilling areas at the top ten areas |
| Objective 3: | To target young offenders, vulnerable people and those at risk of offending through support, education and diversionary activities to reduce incidents of repeat offending. |
| Actions: | Maintain baseline data of young offenders on ASBO, ABC and MAPS Groups |
| | Ensure continuance of the MAPS Groups by close liaison with four secondary schools and attendance at all meetings |
| | Continue Restorative Justice Scheme for 10-17 year olds. Report to Delivery Team on progress of scheme |
| | To increase the number of referrals to Youth Support Service through the re-adoption of YACAB referrals |

| ALCOHOL HARM REDUCTION | |
|-------------------------------|---|
| Aim: | To deliver the contents of the Alcohol Harm Reduction Strategy for the Ryedale District |
| Objective 1: | To continue to raise awareness on the consequences to individual's health and community welfare |
| Actions: | Review the Alcohol Harm Reduction strategy, link with the Cambridge Centre and other Alcohol & Drug Agencies,, Safer Communities, NYP and align with the County Strategy. |
| | Strengthen links and promote an active generic partnership agreement to improve information sharing and collective problem solving. |
| | Continue to run Miss Dorothy and Watch Over Me |
| | Link with the Cambridge Centre A & E Link Worker and A & E Manager to develop a system to feed back relevant data. |
| | Raising and increasing awareness across all age groups via the alcohol harm reduction group |
| | Raising awareness with the community regarding sexual exploitation linked to alcohol use |
| Objective 2: | To reduce the number of repeat offenders linked to alcohol related offences. |
| Actions: | Develop links between the Housing Strategy and the new ASB Housing Officer and the Safer Ryedale Partnership Plan to reduce homelessness |
| | Make use of the non statutory alcohol treatment requirements (ATR) and Community Protection Orders (CPO's) |
| | Criminal Justice Team from the Cambridge Centre to educate and update all partners on non statutory ATR's |
| | Ensuring referral pathways are open into the Women's Community Project for all partners to use |
| Objective 3: | To reduce the level of alcohol related crime and disorder offences as perceived by the community |
| Actions: | Continue to monitor Refusal Registers to track the adherence to No Id No Sale Initiative |
| | Develop a single point contact for the identification and monitoring of alcohol related litter finds |
| | Ensure links to the Domestic Abuse Steering Forum initiatives and deliver joined up awareness raising events |
| | Maintain and develop links into the Pub Watch meetings |
| | Enhance the media programme for the district promoting links to national campaigns and initiatives |

Glossary

| | |
|--------------------------|--|
| ABC | Acceptable Behaviour Contract |
| AHRG | Alcohol Harm Reduction Group |
| ASBO | Anti Social Behaviour Order |
| ATC | Auto Traffic Counter |
| CAF | Common Assessment Framework |
| CAP | Community and Police liaison meetings |
| C&DO | Crime and Disorder Officer (RDC) |
| CPM | Community Partnerships Manager (RDC) |
| CPO | Community Partnerships Officer (RDC) |
| CSCM | Community Safety Crew Manager (NY Fire & Rescue) |
| CSP | Community Safety Partnership |
| CSS | Community Safety Sergeant (NY Police) |
| CYP | Children and Young People's working group |
| DAS | Domestic Abuse Services |
| DV | Domestic Violence |
| MAPS | Multi-agency Problem Solving group |
| MARACs | Multi-agency Risk Assessment Conferences |
| Missdorothy.com/Miss Dot | Computer software used in primary schools to raise children's awareness of risky and/or unacceptable behaviour (their own or other people's) |
| NCCZ | No Cold Calling Zone |
| NHW | Neighbourhood Watch |
| PCC | Police and Crime Commissioner |
| PCSO | Police Community Safety Officer |
| RTC | Road Traffic Collision |
| SNT | Safer Neighbourhood Team (NY Police) |
| Tier 3 Services | Drug and alcohol abuse intervention – requires referral |
| Watch Over Me | As Missdorothy.com above, for secondary schools |

Acknowledgements

Safer Ryedale wishes to thank the following organisations and their staff for all their help, support and involvement in the production of the Joint Strategic Intelligence Assessment and the Partnership Plan

North Yorkshire Police

North Yorkshire Fire & Rescue

North Yorkshire County Council

Ryedale District Council

Ian Cunningham, County Analyst

District based Community Safety Partnerships in North Yorkshire, and Safer York



Safer Ryedale Partnership
Ryedale District Council
Ryedale House
Old Malton Road
Malton
YO17 7HH
01653 600 666

email: communitysafety@ryedale.gov.uk
www.ryesafe.org.uk



Contact Numbers and Web Sites

| | |
|--|----------------|
| Safer Ryedale www.ryesafe.org | 01653 600666 |
| Ryedale District Council www.ryedale.gov.uk | 01653 600666 |
| North Yorkshire Fire & Rescue Service www.northyorksfire.gov.uk | 01609 780 150 |
| North Yorkshire Police www.northyorkshire.police.uk | 0845 60 60 247 |
| North Yorkshire Police Authority www.nypa.org.uk | 01765 641 839 |
| North Yorkshire County Council www.northyorks.gov.uk | 01609 780 780 |
| North York Moors National Park www.visitnorthyorkmoors.org.uk | 01439 770 657 |
| North Yorkshire & York Primary Care Trust www.nyypct.nhs.uk | 01423 815150 |
| North Yorkshire Probation Service www.nyprobation.org.uk | 01609 778644 |
| North Yorkshire Youth Justice Service www.ny-yjs.org.uk | 0845 300 5430 |
| Domestic Abuse Helpline | 0808 200 0247 |
| Crimestoppers | 0800 555 111 |
| North Yorkshire Trading Standards | |
| Doorstep Crime Hotline | 0845 330 3313 |